

# GREENUNIT PRICING FOR ECO HOMES

ARC™

EFFECTIVE FROM APRIL 2019

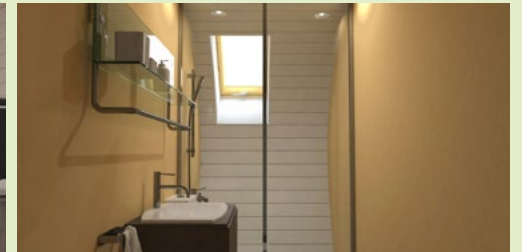


▼ Eco • Modular • Enduring

GREENUNIT

# CONTENTS

1 Bedroom ARC™ .....	Page 3
2 Bedroom ARC™ .....	Page 4
3 Bedroom ARC™ .....	Page 5



Speak to our sales team on **01865 803101**

**ARC**™



# 1 BEDROOM ARC™

52 sqm  
Gross Internal  
Area

from £124,800  
(excl. VAT)



Size Based on Gross Internal Area (GIA)	Cost per sqm Gross Internal Area	Gross Internal Area (GIA)	Useable space dimension (Due to curvature of the walls)	External dimension
52 sqm	£2,400	W 4m x L13m	W 4.8m x L13m	W 5.5m x L13.3m

- A one bedroom, one bathroom building with kitchen and living area
- Suggested layout: 4m (floor width) x13m (length) (internal floor dimension)



SIZES are based on our recommendation for best use of space in our ARC™ 1 BEDROOM building. All sizes and layouts can be adapted to your own specification.

**INSTALLED PRICES INCLUDE AS STANDARD:** Pre-assembled building, kitchen, bathroom, floor and wall finishes, lighting, heating and extraction, estimate of likely haulage and lifting costs (subject to site visit which will confirm site access and distances), likely foundations costs based on typical ground conditions and building regulation costs.

**INSTALLED PRICES EXCLUDE:** Bringing services to the building (water, drainage, electricity and broadband), decking and landscaping, planning and design consultancy connected with obtaining planning permission. A personalised quotation can be prepared to client's specifications.

Prices shown in pounds sterling exclude VAT and are intended as a guide only. Some buildings are exempt from VAT and others a reduced rate of 5% may apply. New residential buildings are generally exempt from VAT. If further details on VAT are required please contact us or refer to the [HMRC website](#).

Our standard Terms and Conditions of Sale apply. Green Unit Limited have a policy of continuous improvement, we therefore reserve the right to amend product specifications without notice.

Speak to our sales team on 01865 803101

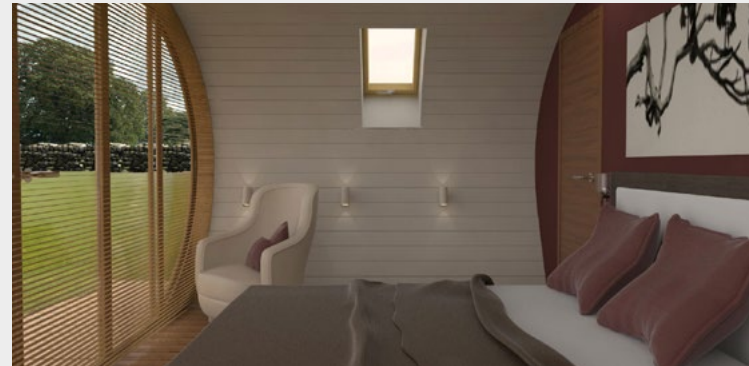
ARC™



# 2 BEDROOM ARC™

Size Based on Gross Internal Area (GIA)	Cost per sqm Gross Internal Area	Gross Internal Area (GIA)	Useable space dimension (Due to curvature of the walls)	External dimension
65 sqm	£2,400	W 4m x L16.25m	W 4.8m x L16.25m	W 5.5m x L16.5m

- A two bedroom, one bathroom building with kitchen and living area
- Suggested layout: 4m (floor width) x 16.25m (length) (internal floor dimension)



65 sqm  
Gross Internal  
Area

SIZES are based on our recommendation for best use of space in our ARC™ 2 BEDROOM building. All sizes and layouts can be adapted to your own specification.

**INSTALLED PRICES INCLUDE AS STANDARD:** Pre-assembled building, kitchen, bathroom, floor and wall finishes, lighting, heating and extraction, estimate of likely haulage and lifting costs (subject to site visit which will confirm site access and distances), likely foundations costs based on typical ground conditions and building regulation costs.

**INSTALLED PRICES EXCLUDE:** Bringing services to the building (water, drainage, electricity and broadband), decking and landscaping, planning and design consultancy connected with obtaining planning permission. A personalised quotation can be prepared to client's specifications.

Prices shown in pounds sterling exclude VAT and are intended as a guide only. Some buildings are exempt from VAT and others a reduced rate of 5% may apply. New residential buildings are generally exempt from VAT. If further details on VAT are required please contact us or refer to the [HMRC website](#).

Our standard Terms and Conditions of Sale apply. Green Unit Limited have a policy of continuous improvement, we therefore reserve the right to amend product specifications without notice.

from £156,000  
(excl. VAT)



Speak to our sales team on 01865 803101

ARC™



# 3 BEDROOM ARC™

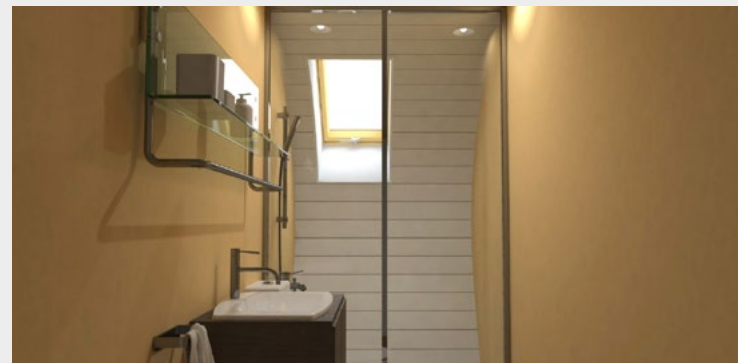
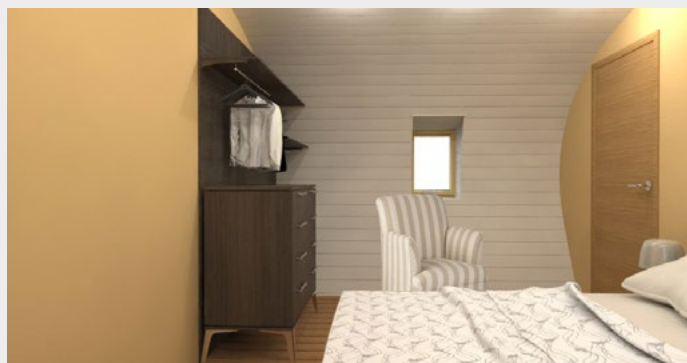
91 sqm  
Gross Internal  
Area

from £218,000  
(excl. VAT)



Size Based on Gross Internal Area (GIA)	Cost per sqm Gross Internal Area	Gross Internal Area (GIA)	Useable space dimension (Due to curvature of the walls)	External dimension
91 sqm	£2,400	W 4m x L22.75m	W 4.8m x L22.75m	W 5.5m x L22.9m

- A three bedroom, two bathroom building with kitchen and living area
- Suggested layout: 4m (floor width) x 22.75m (length) (internal floor dimension)



SIZES are based on our recommendation for best use of space in our ARC™ 3 BEDROOM building. All sizes and layouts can be adapted to your own specification.

**INSTALLED PRICES INCLUDE AS STANDARD:** Pre-assembled building, kitchen, bathroom, floor and wall finishes, lighting, heating and extraction, estimate of likely haulage and lifting costs (subject to site visit which will confirm site access and distances), likely foundations costs based on typical ground conditions and building regulation costs.

**INSTALLED PRICES EXCLUDE:** Bringing services to the building (water, drainage, electricity and broadband), decking and landscaping, planning and design consultancy connected with obtaining planning permission. A personalised quotation can be prepared to client's specifications.

Prices shown in pounds sterling exclude VAT and are intended as a guide only. Some buildings are exempt from VAT and others a reduced rate of 5% may apply. New residential buildings are generally exempt from VAT. If further details on VAT are required please contact us or refer to the [HMRC website](#).

Our standard Terms and Conditions of Sale apply. Green Unit Limited have a policy of continuous improvement, we therefore reserve the right to amend product specifications without notice.

Speak to our sales team on 01865 803101

ARC™

